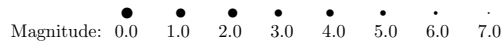


Chart 1: DeclinationNorth of + 65°

Magnitude: 0.0 1.0 2.0 3.0 4.0 5.0 6.0 7.0



Chart 2: RA 0^h to 4^h , Declination $+65^\circ$ to $+20^\circ$



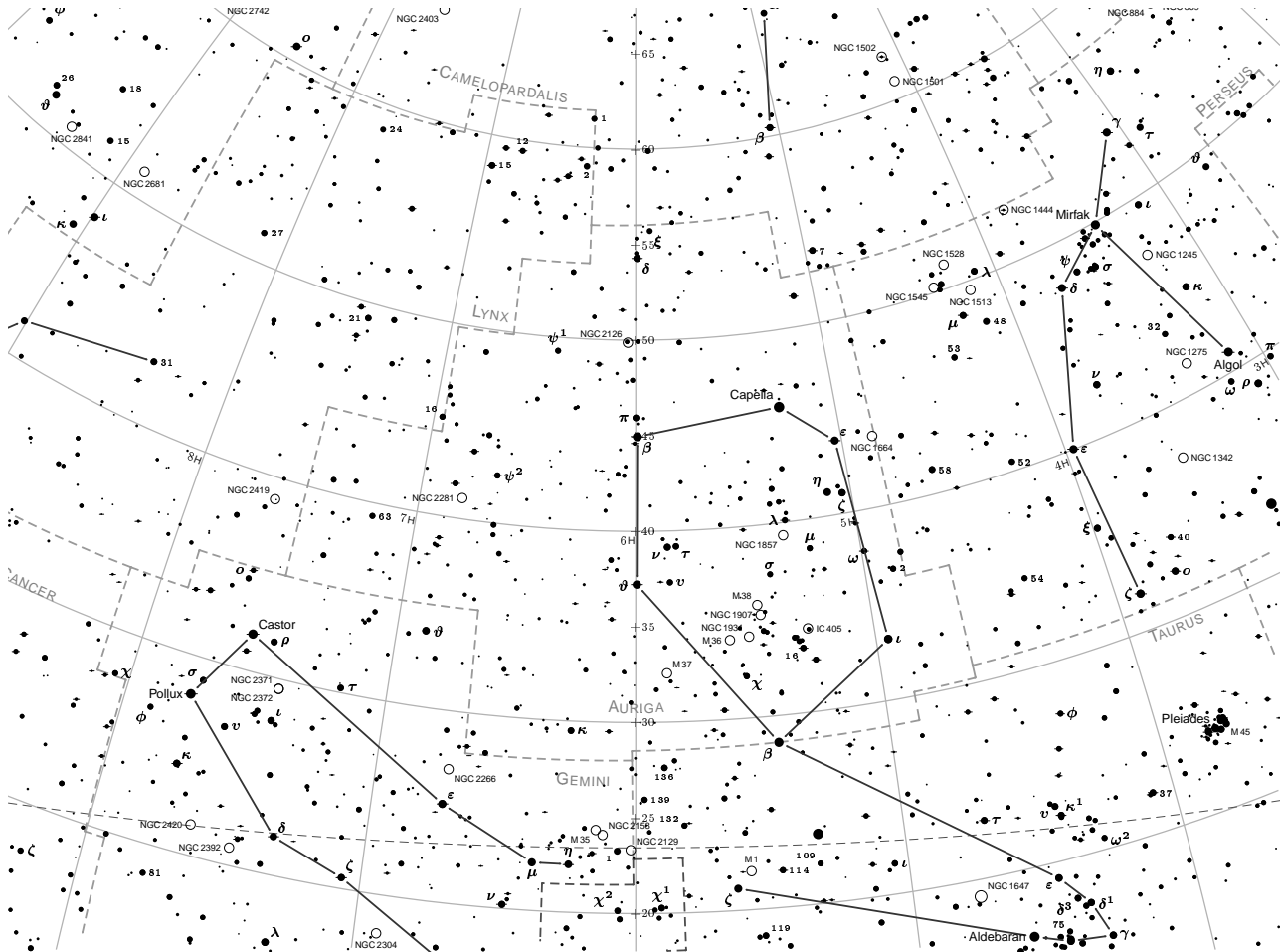


Chart 3: RA 4^h to 8^h, Declination +65° to +20°

Magnitude: 0.0 1.0 2.0 3.0 4.0 5.0 6.0 7.0

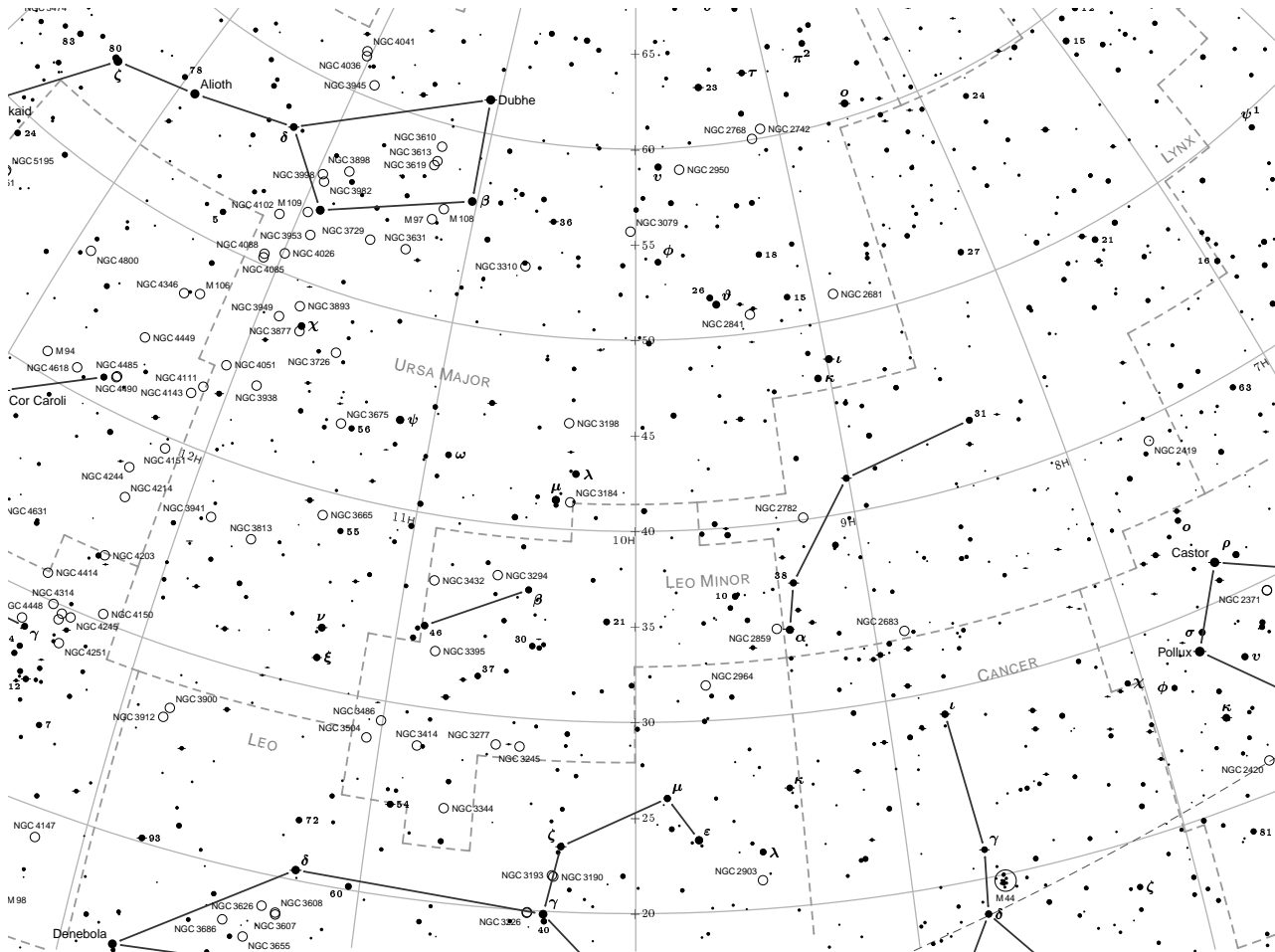


Chart 4: RA 8^h to 12^h, Declination + 65° to + 20°

Magnitude: 0.0 1.0 2.0 3.0 4.0 5.0 6.0 7.0

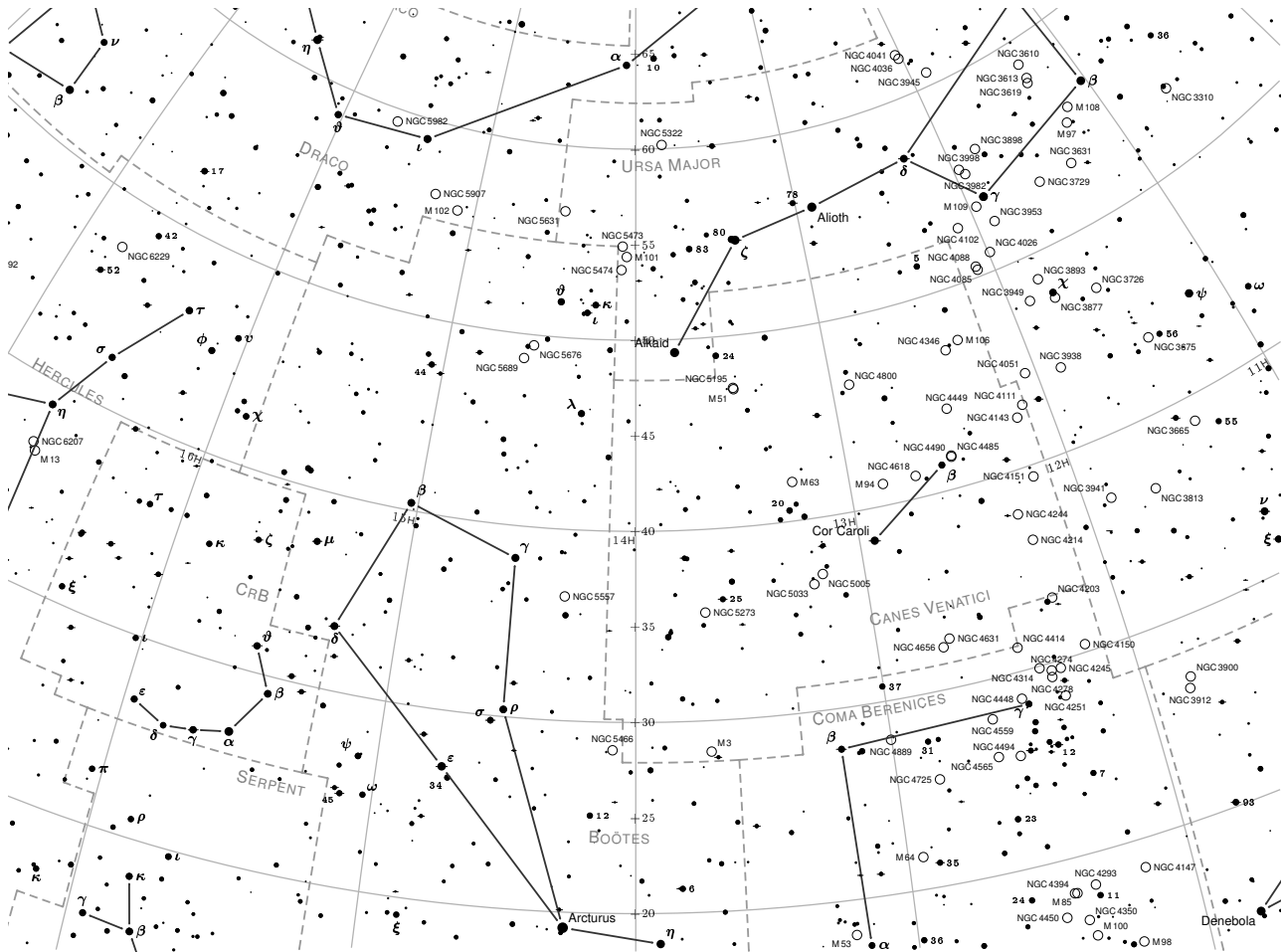


Chart 5: RA 12^h to 16^h, Declination +65° to +20°

Magnitude: 0.0 1.0 2.0 3.0 4.0 5.0 6.0 7.0

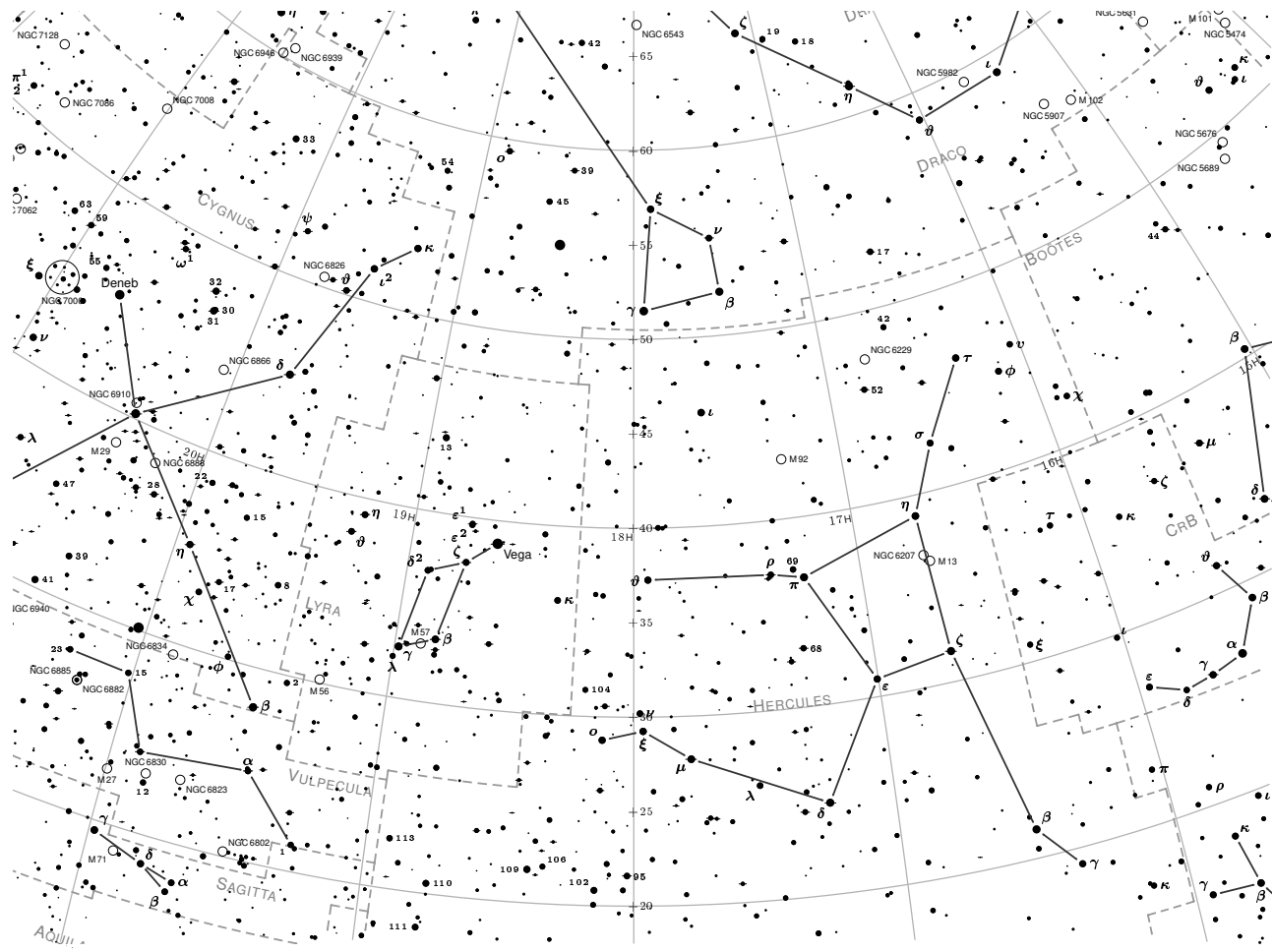


Chart 6: RA 16^h to 20^h, Declination +65° to +20°

Magnitude: 0.0 1.0 2.0 3.0 4.0 5.0 6.0 7.0

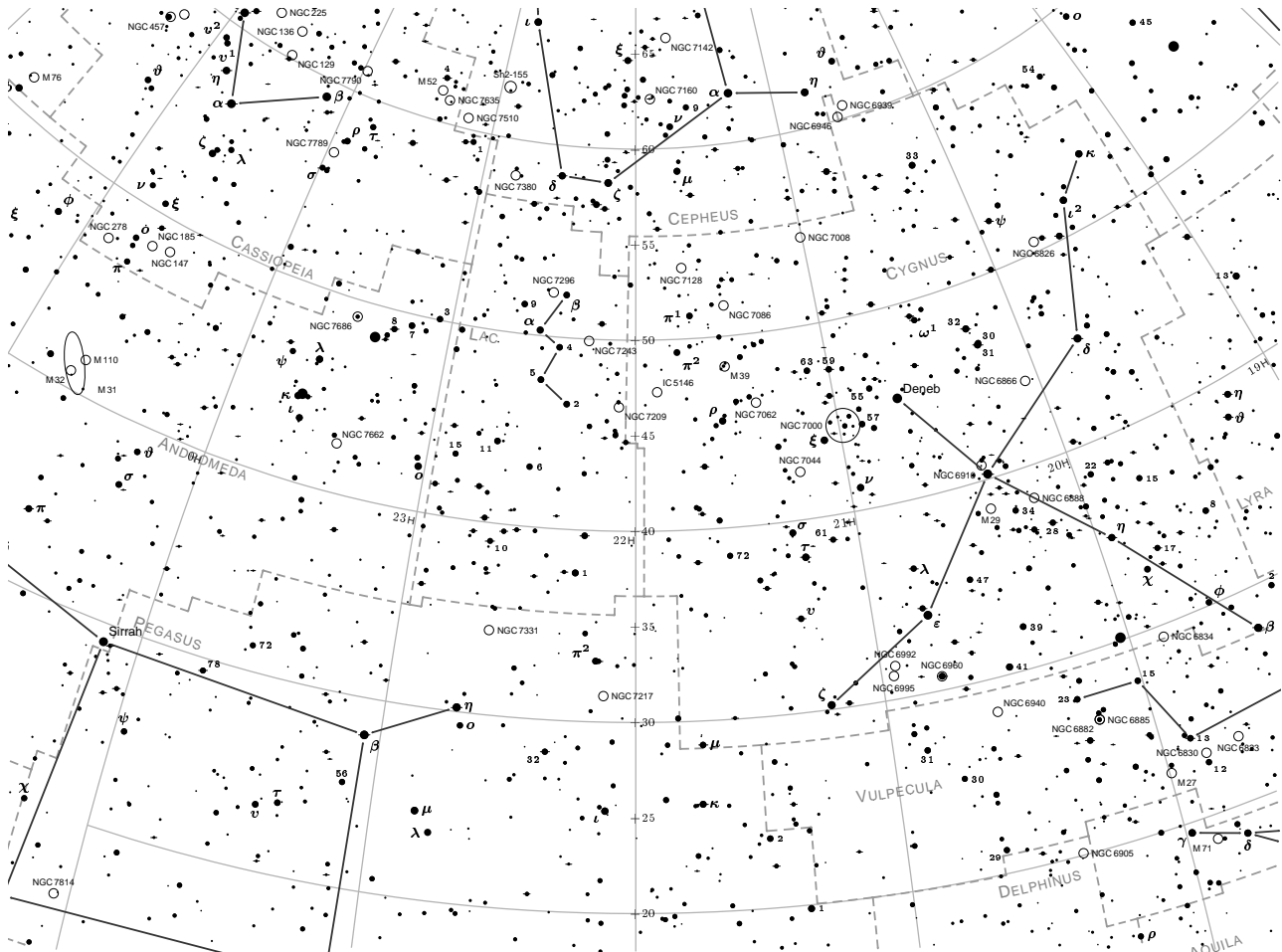


Chart 7: RA 20^h to 0^h, Declination + 65° to + 20°

Magnitude: 0.0 1.0 2.0 3.0 4.0 5.0 6.0 7.0

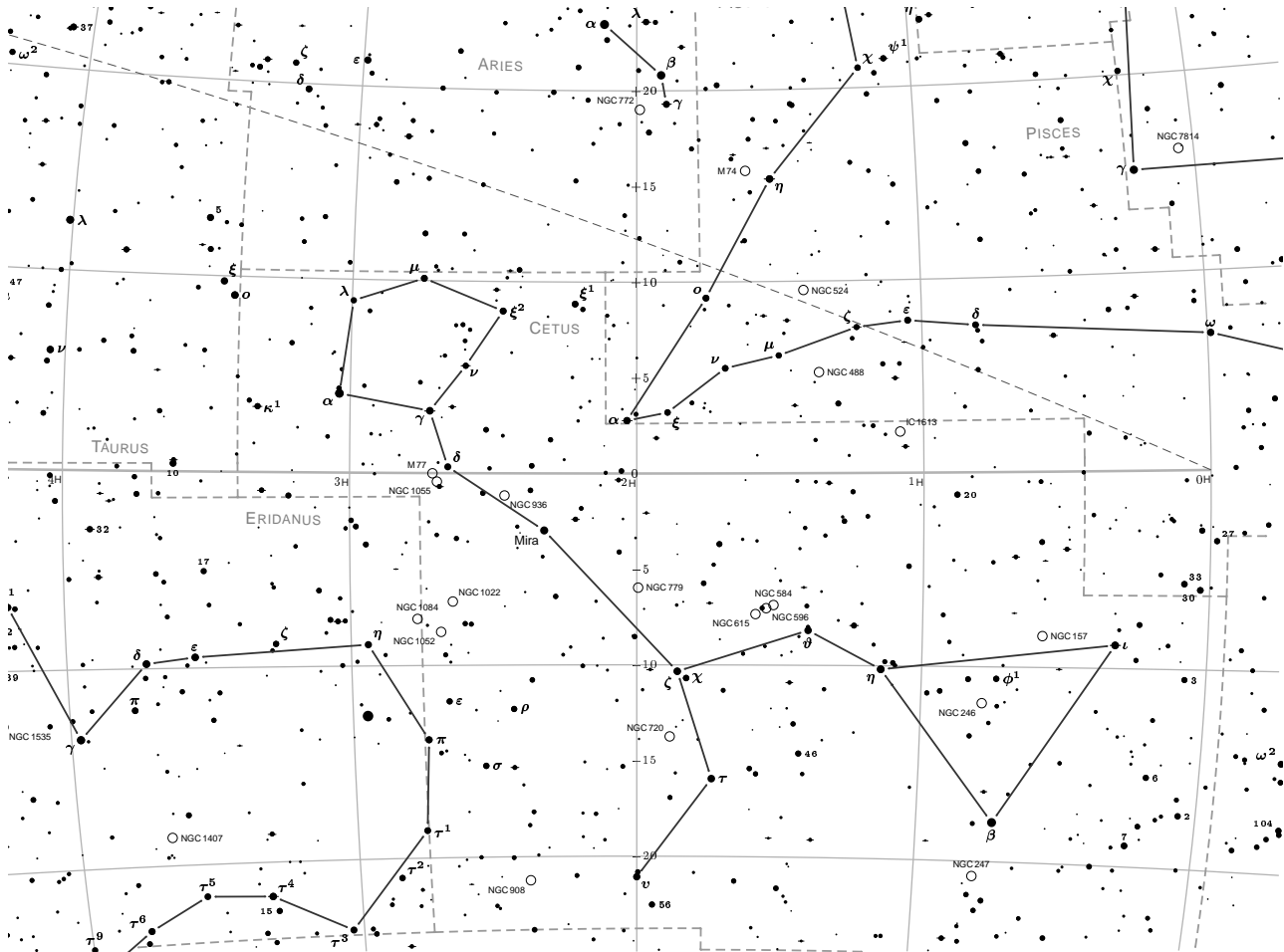


Chart 8: RA 0^h to 4^h, Declination +20° to -20°

Magnitude: 0.0 1.0 2.0 3.0 4.0 5.0 6.0 7.0



Chart 9: RA 4^h to 8^h , Declination $+20^\circ$ to -20°

Magnitude: 0.0 1.0 2.0 3.0 4.0 5.0 6.0 7.0

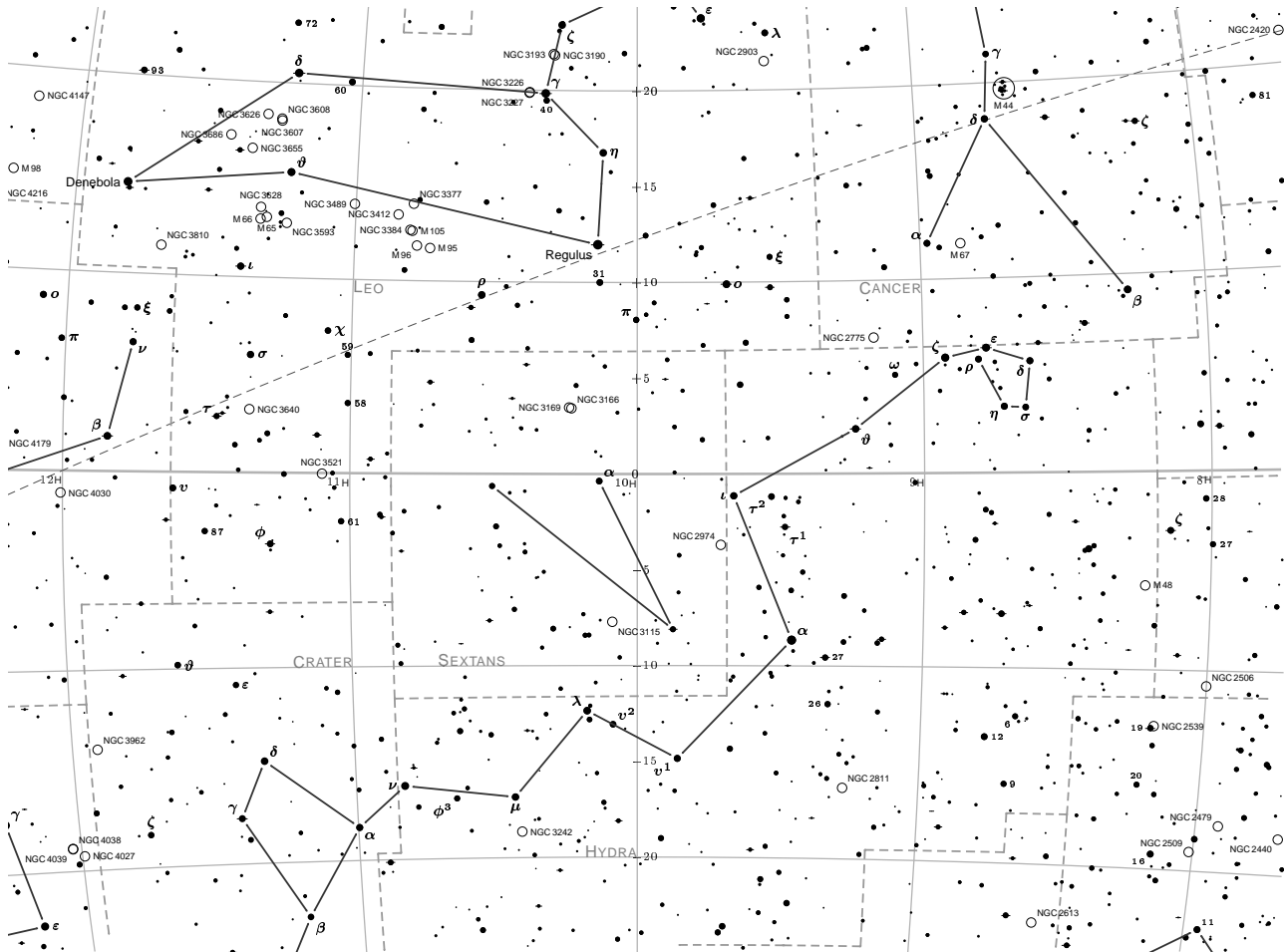


Chart 10: RA 8^h to 12^h, Declination +20° to -20°

Magnitude: 0.0 1.0 2.0 3.0 4.0 5.0 6.0 7.0

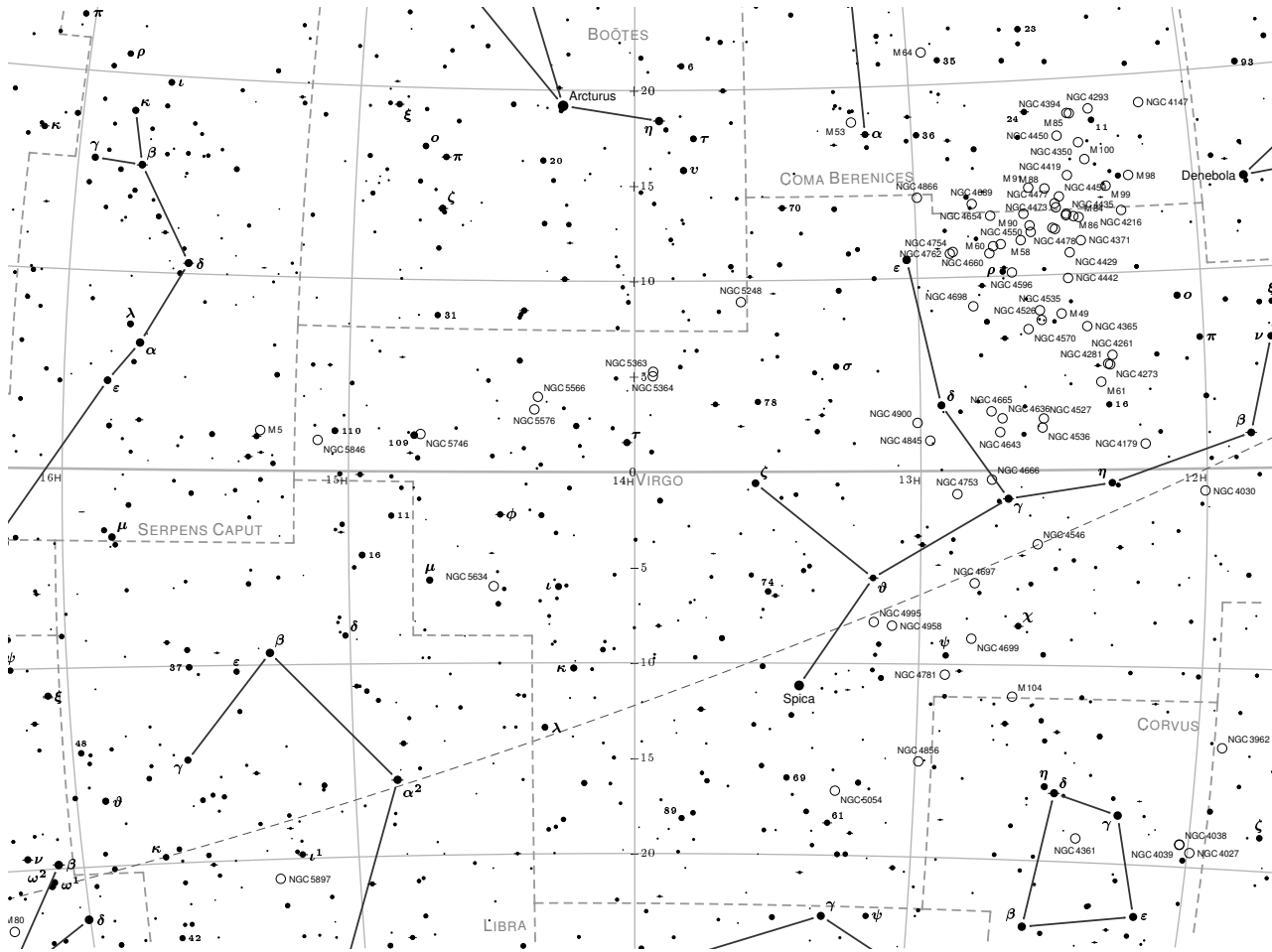


Chart 11: RA 12^h to 16^h, Declination +20° to -20°

Magnitude: 0.0 1.0 2.0 3.0 4.0 5.0 6.0 7.0

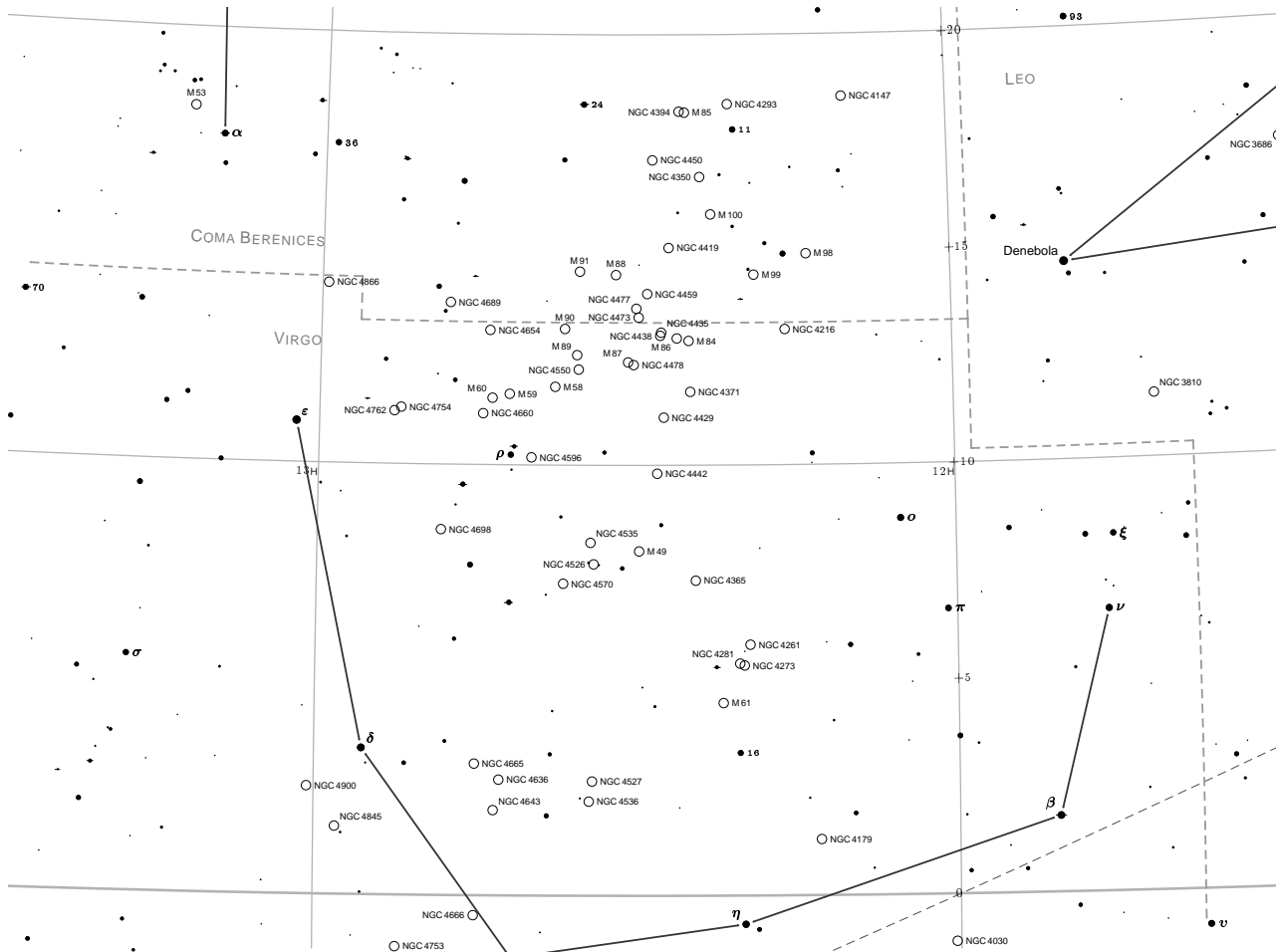


Chart 11a (supplement): RA 11.5^h to 13.5^h, Declination +20° to 0°

Magnitude: 0.0 1.0 2.0 3.0 4.0 5.0 6.0 7.0

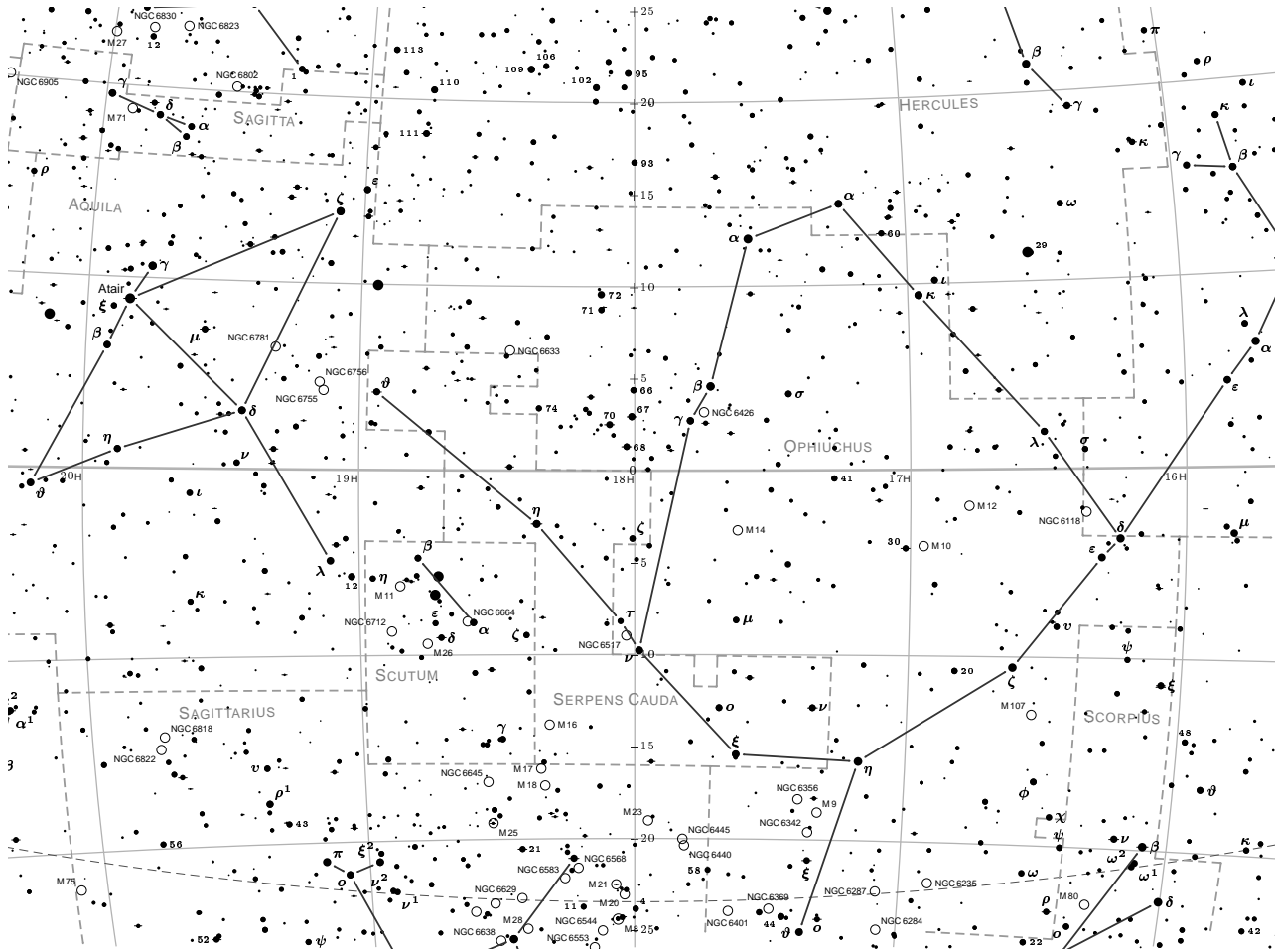


Chart 12: RA 16^h to 20^h, Declination +20° to -20°

Magnitude: 0.0 1.0 2.0 3.0 4.0 5.0 6.0 7.0

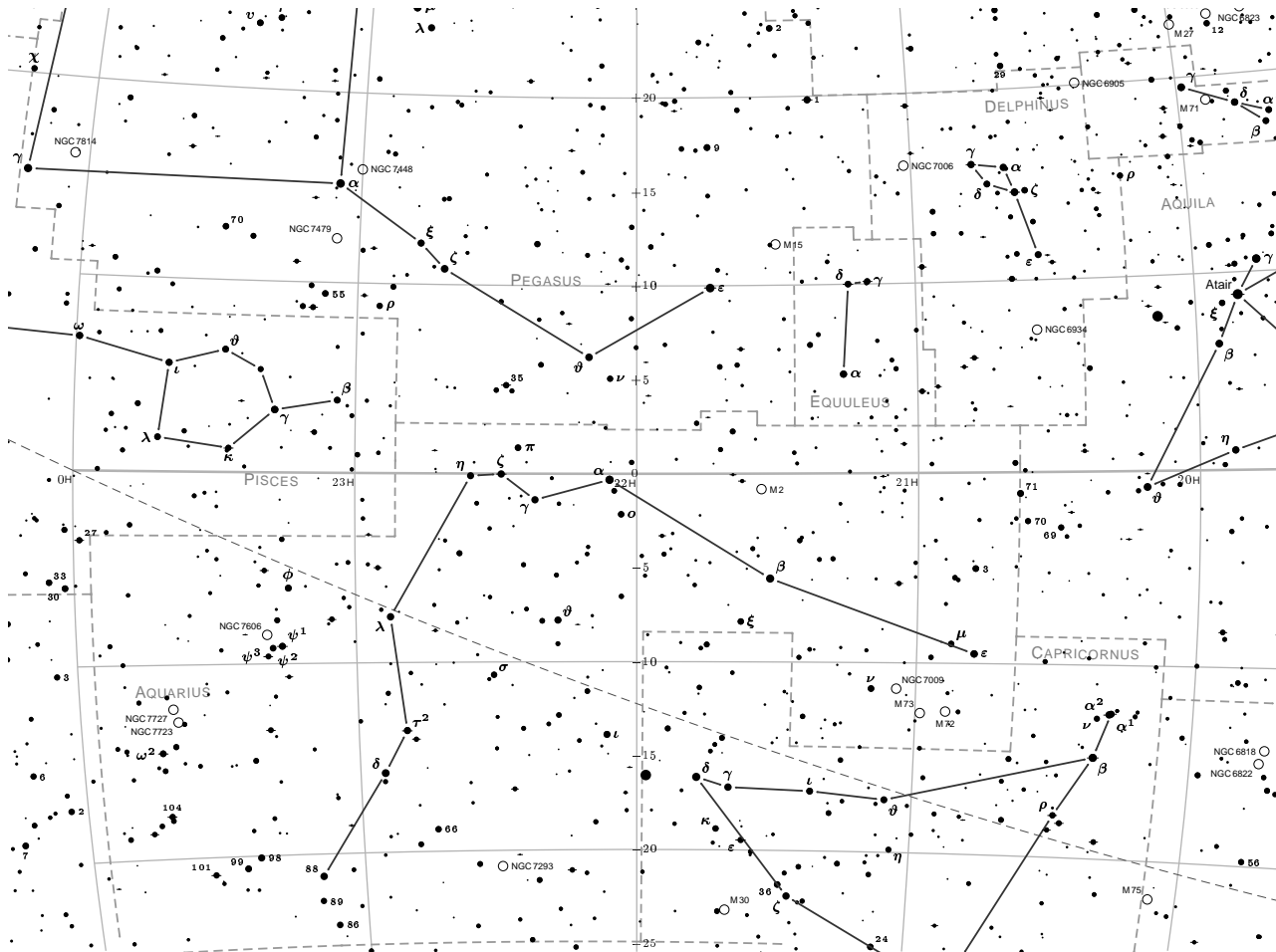


Chart 13: RA 20^h to 0^h, Declination +20° to -20°

Magnitude: 0.0 1.0 2.0 3.0 4.0 5.0 6.0 7.0

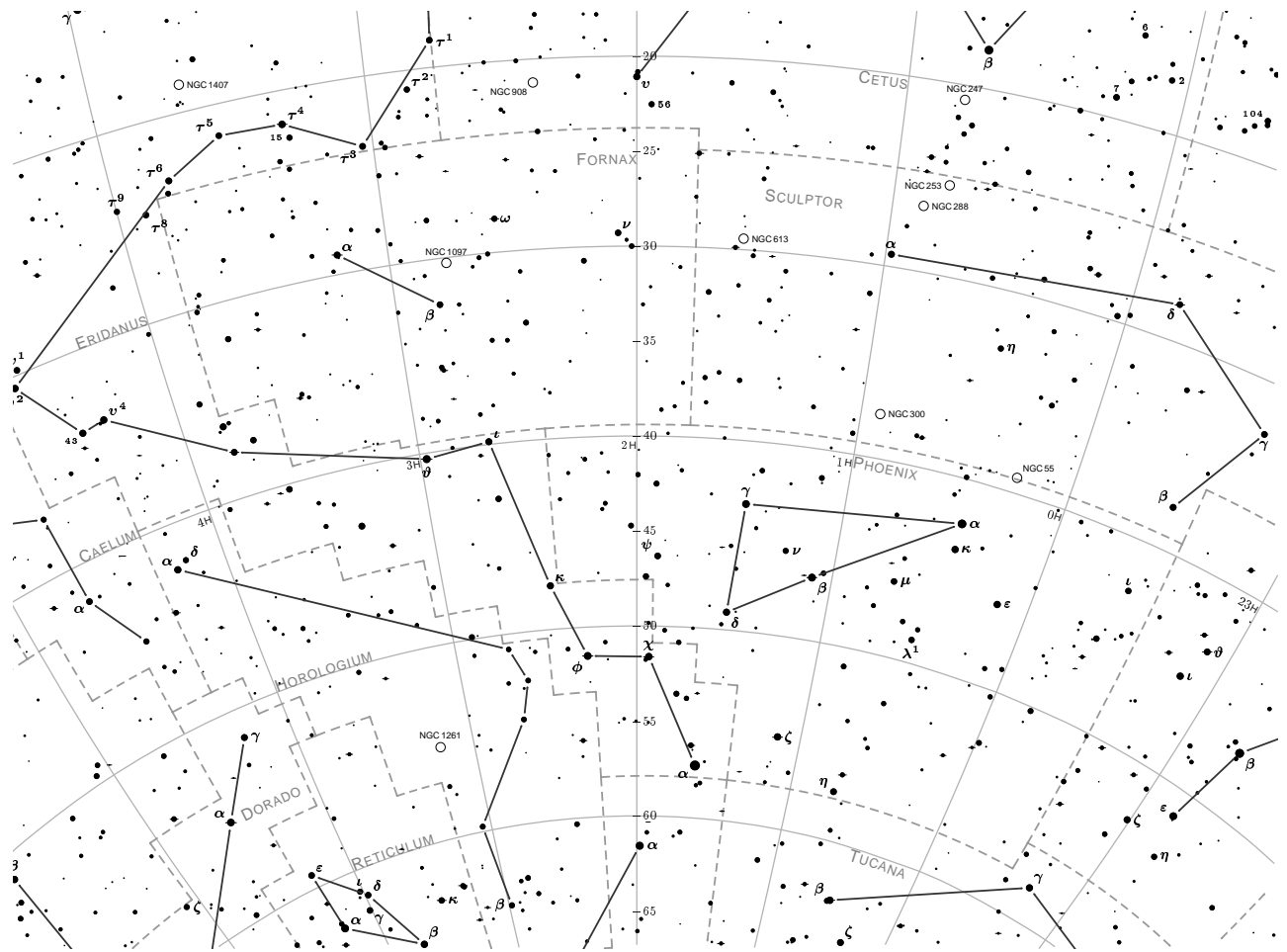


Chart 14: RA 0^h to 4^h, Declination - 20° to - 65°

Magnitude: 0.0 1.0 2.0 3.0 4.0 5.0 6.0 7.0



Chart 15: RA 4^h to 8^h, Declination -20° to -65°

Magnitude: 0.0 1.0 2.0 3.0 4.0 5.0 6.0 7.0

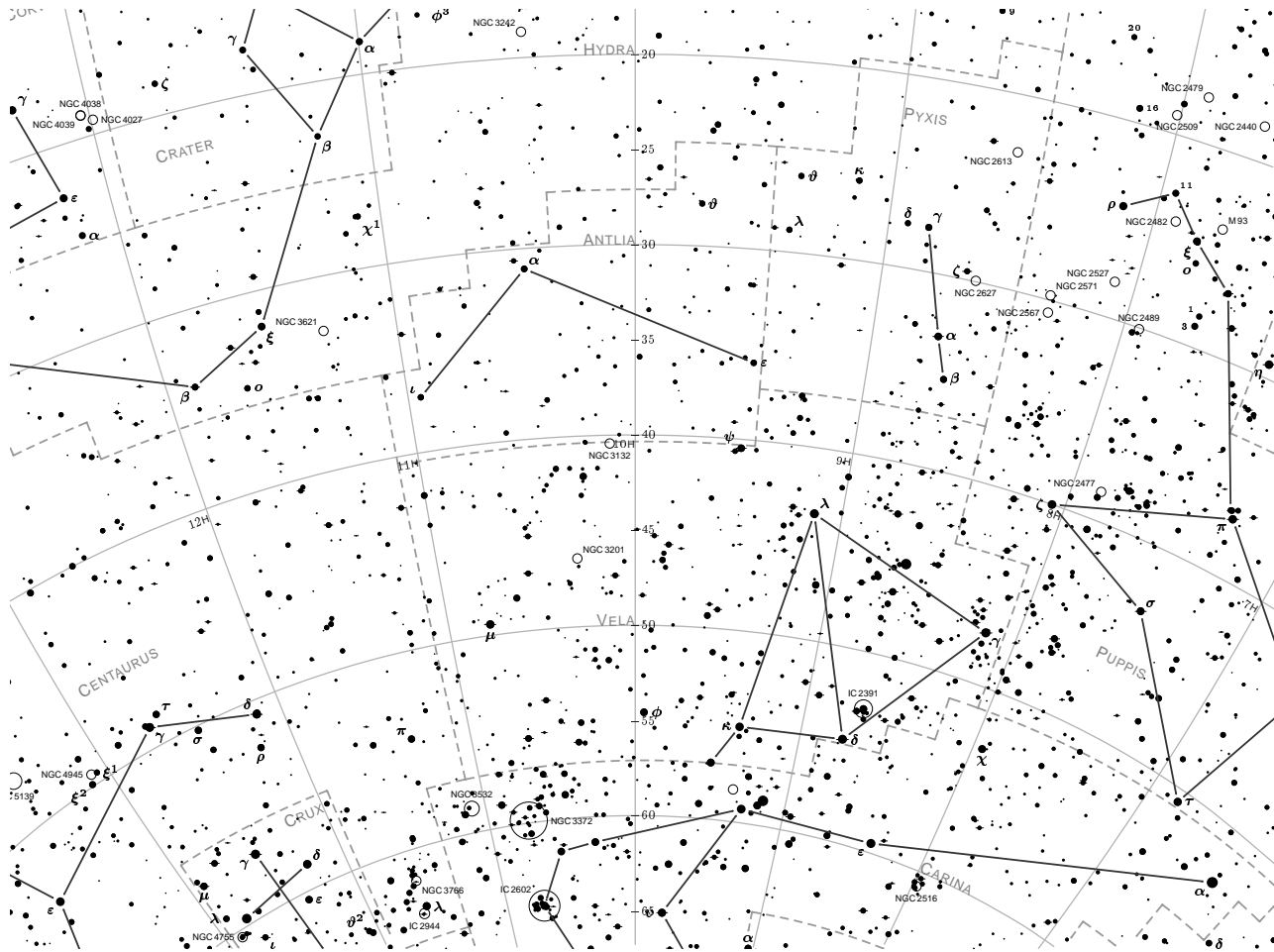


Chart 16: RA 8^h to 12^h , Declination -20° to -65°

Magnitude: 0.0 1.0 2.0 3.0 4.0 5.0 6.0 7.0



Chart 17: RA 12^h to 16^h, Declination -20° to -65°

Magnitude: 0.0 1.0 2.0 3.0 4.0 5.0 6.0 7.0

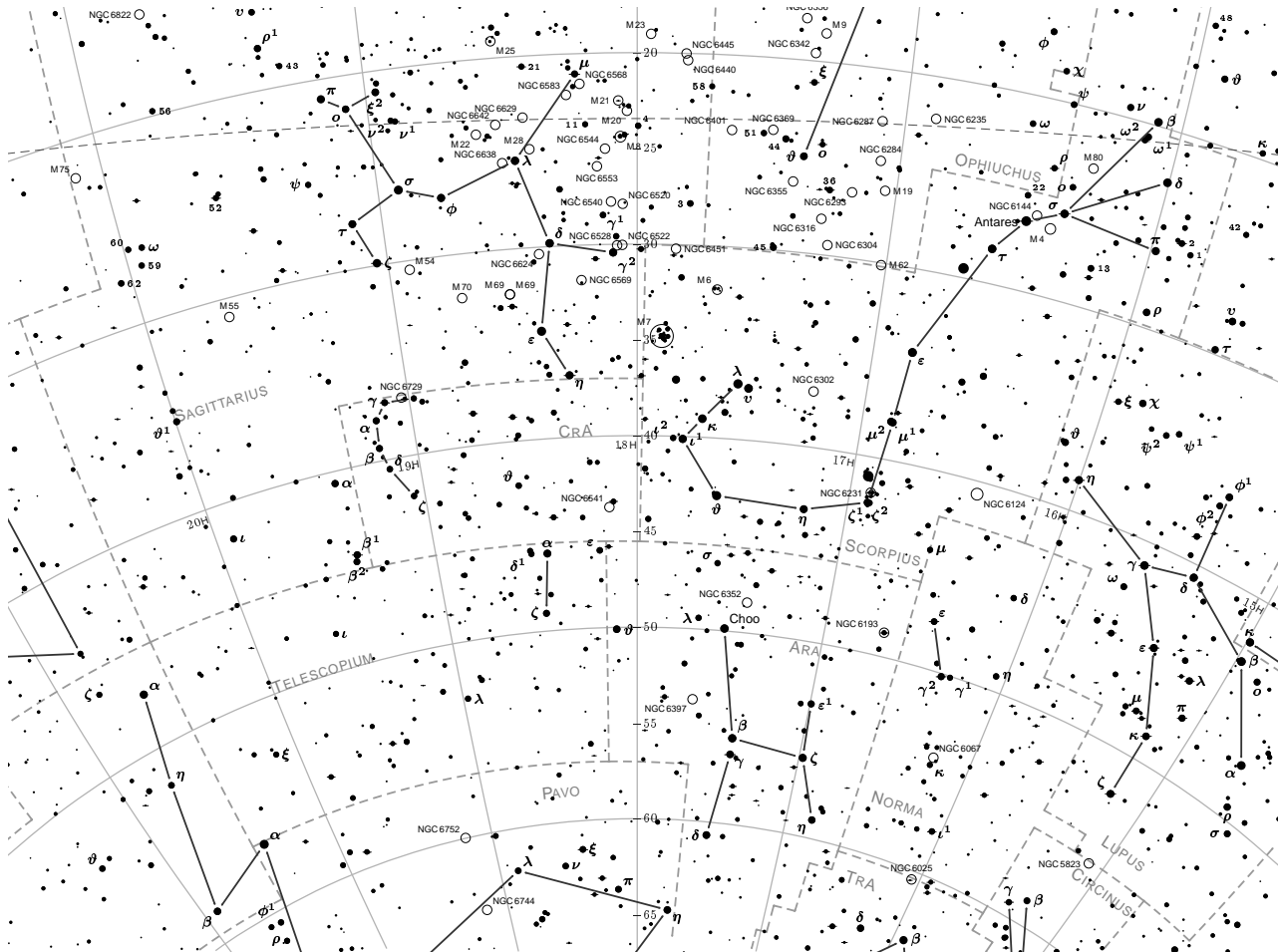


Chart 18: RA 16^h to 20^h, Declination -20° to -65°

Magnitude: 0.0 1.0 2.0 3.0 4.0 5.0 6.0 7.0

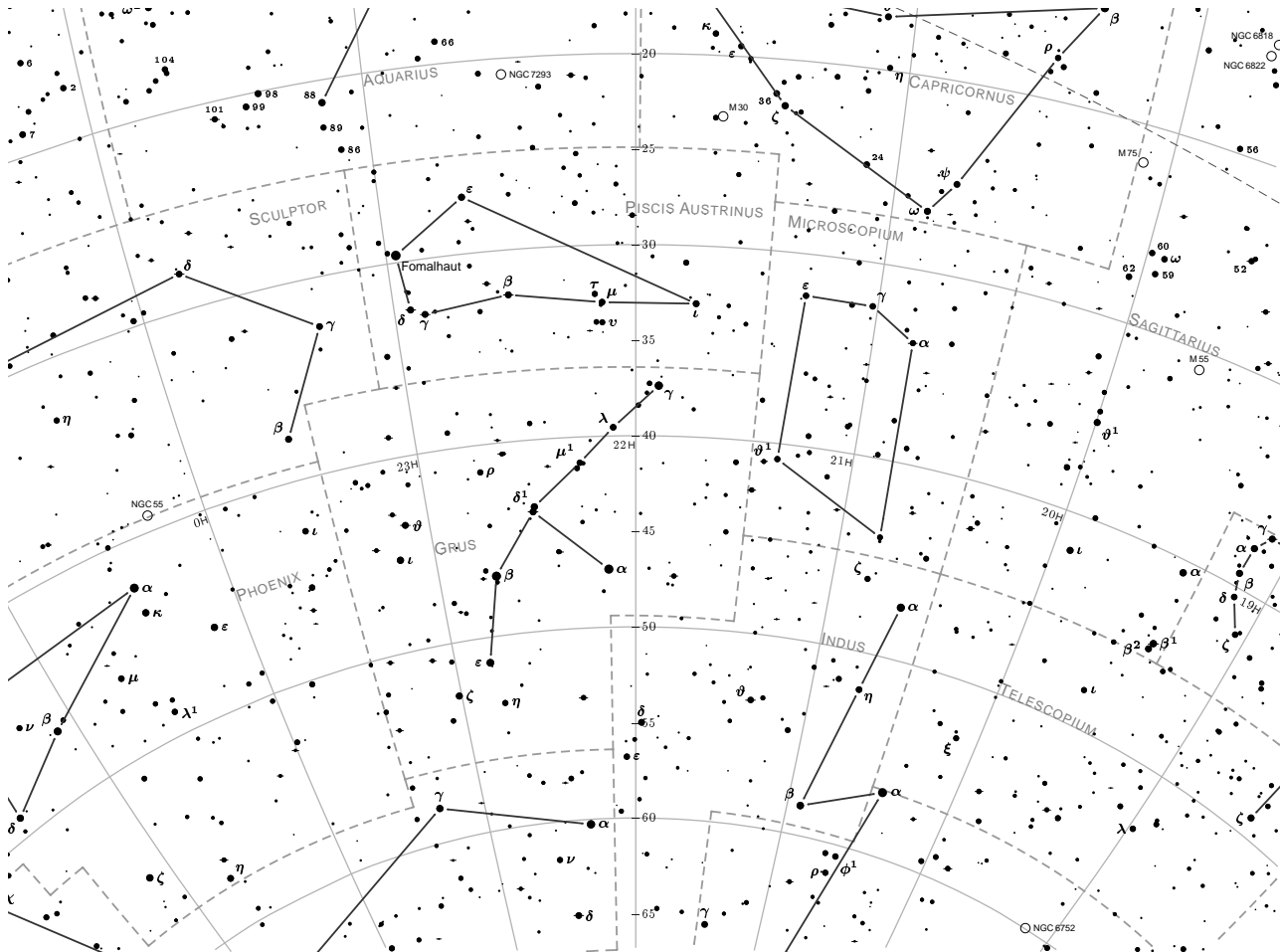


Chart 19: RA 20^h to 0^h , Declination -20° to -65°

Magnitude: 0.0 1.0 2.0 3.0 4.0 5.0 6.0 7.0

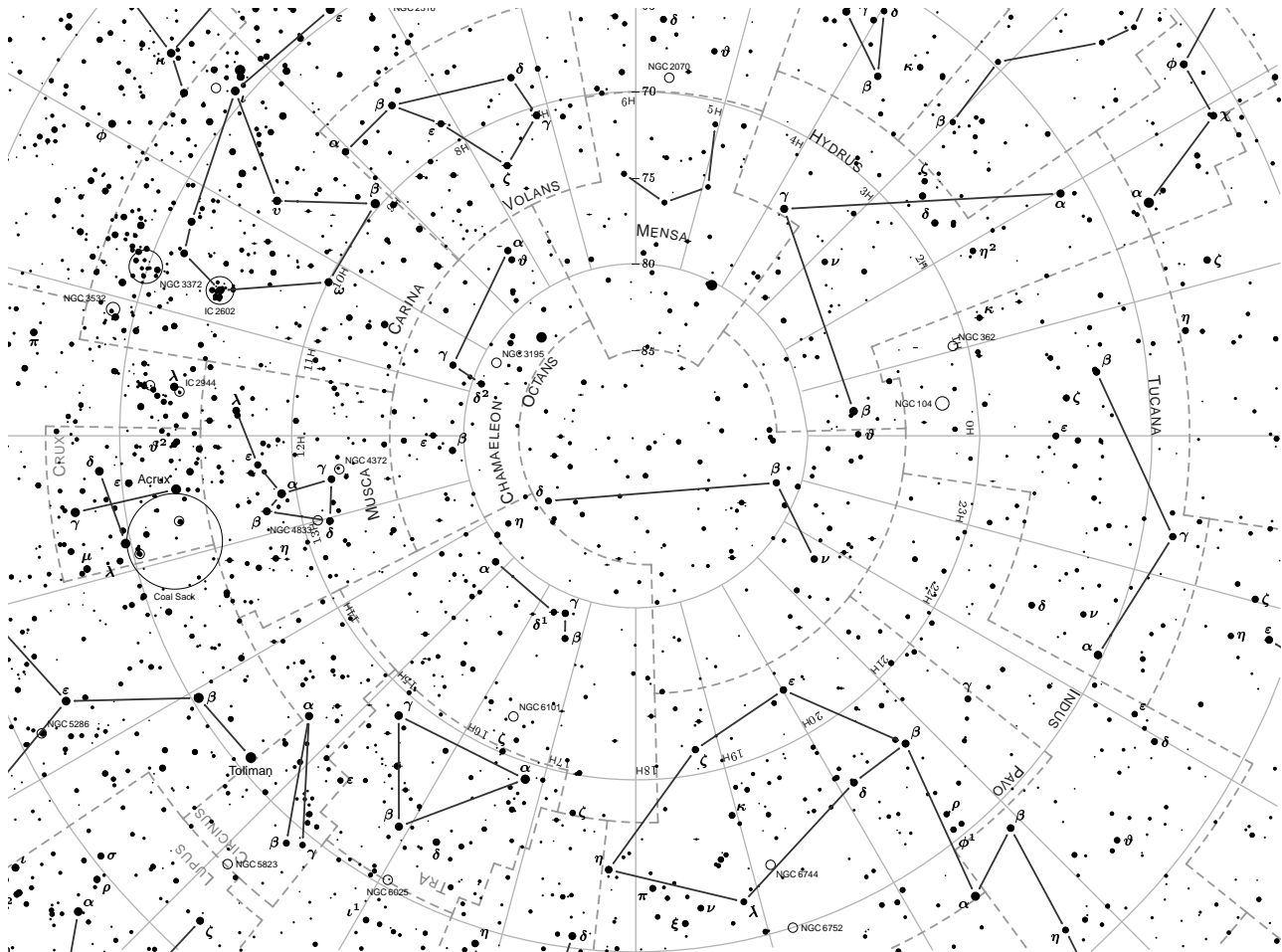


Chart 20: Declination South of -65°

Magnitude: 0.0 1.0 2.0 3.0 4.0 5.0 6.0 7.0